

PEAK RC WSM case (node-breaker)

Khanh Thai
Tacoma Power

TPWR Next-day study

- PEAK RC Operation Planning case
 - Topology
 - Load Forecast
 - Generator Unit Commitment
 - Interchange
 - TPWR additional updates
 - Update topology for next-day (using COS)
 - Update load and generation data (critical for TPWR)
 - Contingency

PEAK Operation Planning Cases





Operations

- Study Libraries
- Entity Studies
- IROL Information
- RC Study Reports**
- RC Study Reports Archive
- Seasonal SOL Coordination
- SOL Methodology
- Operating Libraries
- Coordinated Outage System

RC Study Reports

The RC Study Reports section serves as the Western Interconnection's single repository for housing next-day Operational Planning Analysis results and models from Peak Reliability study engineers.

 The tools and information on this page are restricted. Please ensure you are taking appropriate steps to ensure their protection.

 **Help Resources**
Coming Soon

RC Study Reports

- RC Studies Reports
 - 10132014
 - 10142014
 - 10152014
 - 10162014
 - 10172014



Name	Modified
10222014	10/21/2014 2:41:48 PM
10212014	10/20/2014 4:36:40 PM
10202014	10/17/2014 12:36:32 PM
10192014	10/17/2014 12:36:24 PM

PEAK COS

COS (Reliability) - Outage Request Index

Outage Request Index

Outage Request Index

Requested Outage Date: 2014 / 10 / 09  to 2014 / 11 / 09 

Control Center

Equipment Type(s): Trans Ccts Stn Eqp Gen Units
 Protection Comms Paths Other

Voltage Class: is between 100 and 240 kV

Requested By:

Request Status:

- all
- Proposed
- Submitted
- Approved



Ctrl-click

Outage Number -

Outage Requests appearing in **red** are overdue. If you have requested an outage that is overdue, please

Outage #/ Revision/ Status/ Charge #	Station/ Circuit/Equipment	Outage Req. Start	Outage Req. Complete	Required Approvals	Path(s)	
					Path	OTC Impact
1-236988 Revision #2 Approved	Alder-LaGrande #1 115 kV line from LaGrande PCB 10- 89 & PCB 10-393 to	2014/10/13 08:00	2014/10/16 16:00	TPWR-TCC: Approved		

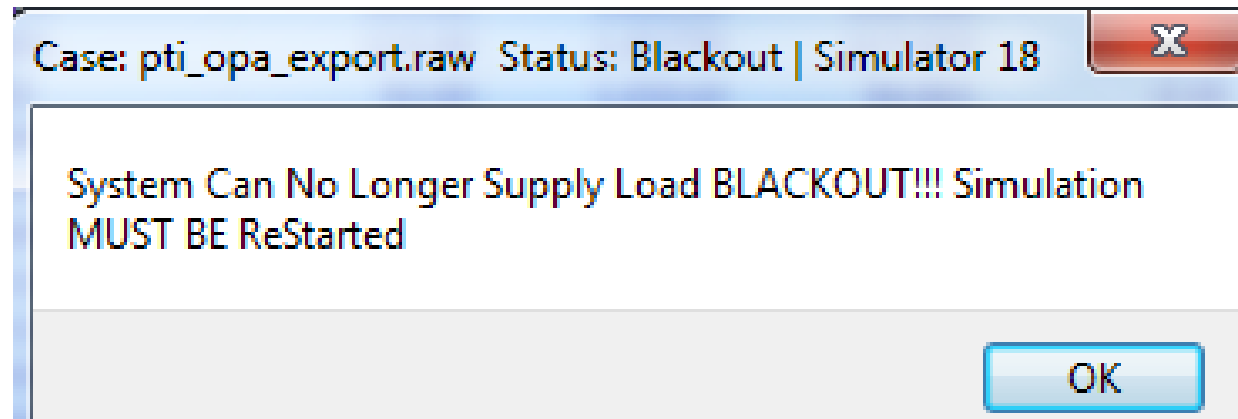
PEAK RC case

Name	Date modi...	Type	Size
 pti_opa_export	10/8/2014 ...	RAW File	5,822 KB
 PowerWorld_OPA_Export	10/8/2014 ...	Microsoft Excel Comma Separated Values ...	35,814 KB

- Pti_opa_export case
 - Has ~15,000 buses
 - Very similar to Planning case but NOT as solvable
- PowerWorld_OPA_Export case
 - Has ~90,000 buses, node-breaker representation
 - Bus numbers are auto generated (changing)
 - Labels are static

TPWR Experience

- PTI cases
 - Usable prior to DB60 (08/11/2014)PTI
 - After 08/11/2014:



TPWR Experience

- PW Node-breaker case
 - Modify data using LABELS
 - Contingency runs take longer time (6- 10 times longer than Planning case without ITP)
 - Review the case carefully after each PEAK RC WSM database update
 - Consider getting ITP Add-on