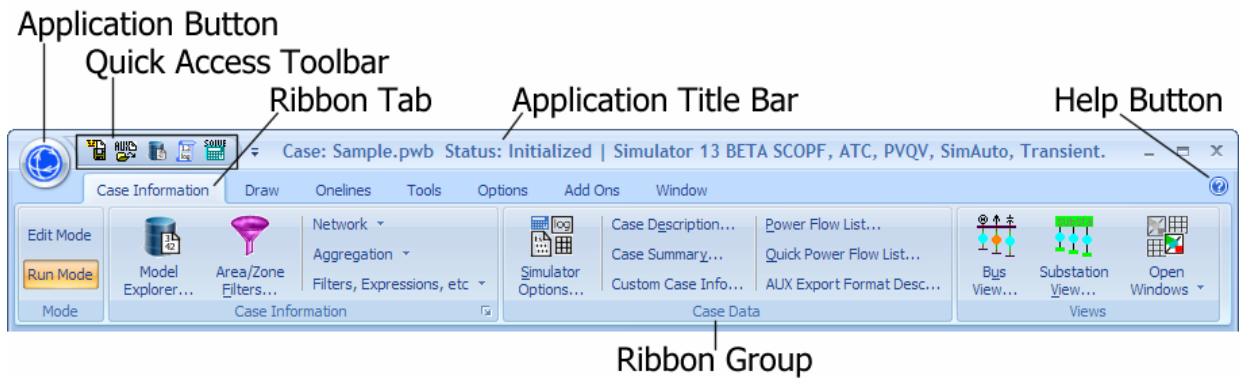


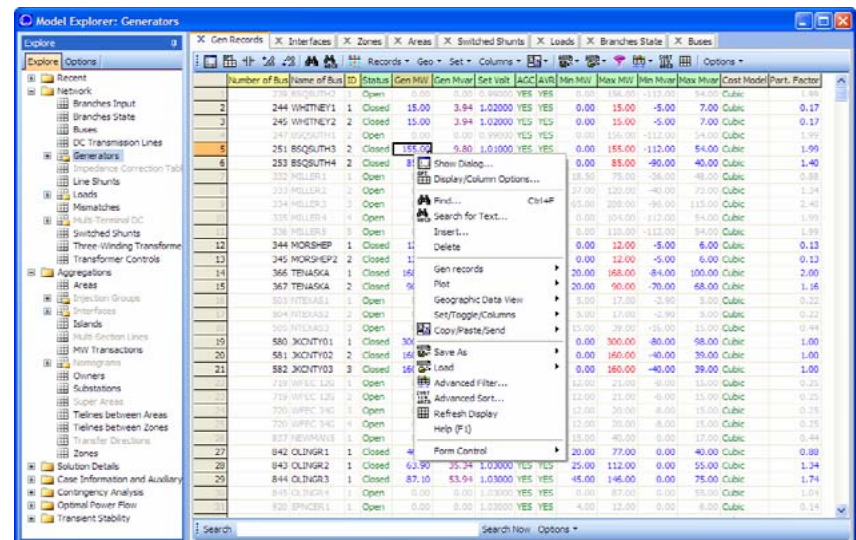
New Look for Simulator 13



- The Ribbon
 - Replaces Menus and Toolbars



- The Model Explorer
 - Encapsulates most of the case information displays



Motivation for the Change



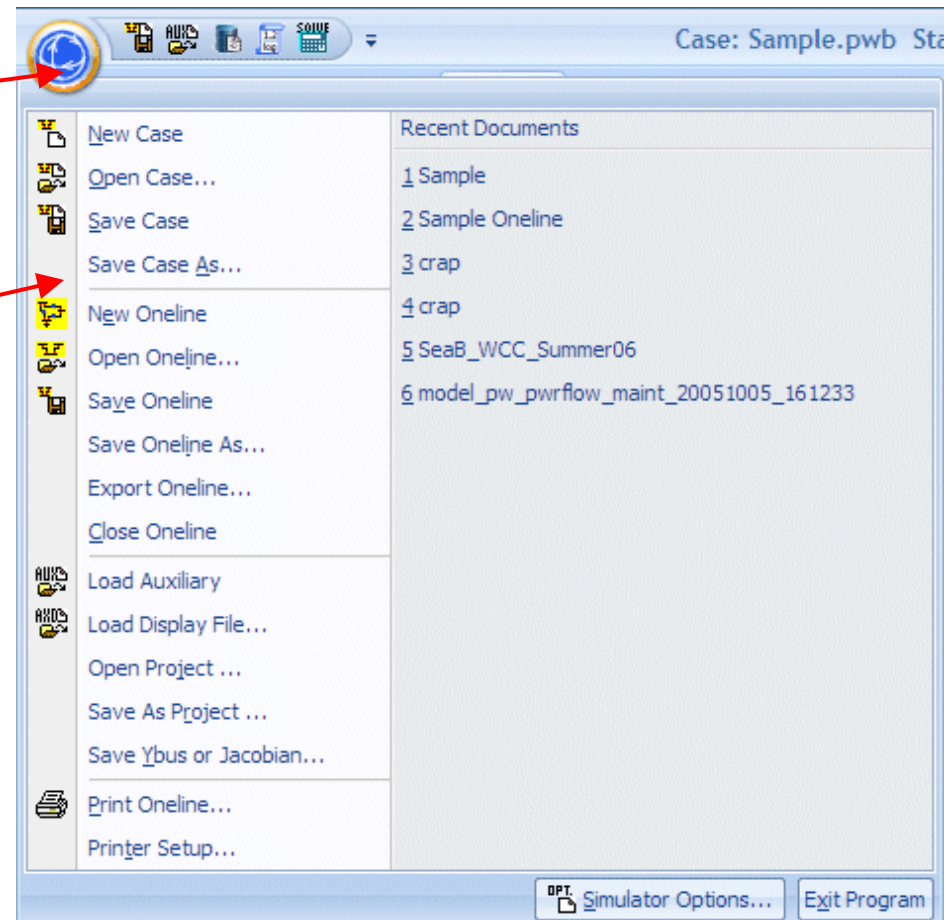
- Problem: Very Large Number of Features
 - No visual clues to signal the most common
 - Too many options grouped together
- Solution: The Ribbon

- Problem: Case Information Menu and Displays
 - Too many options
 - Too many windows open simultaneously
- Solution: The Model Explorer

The Ribbon: Application Button and Menu



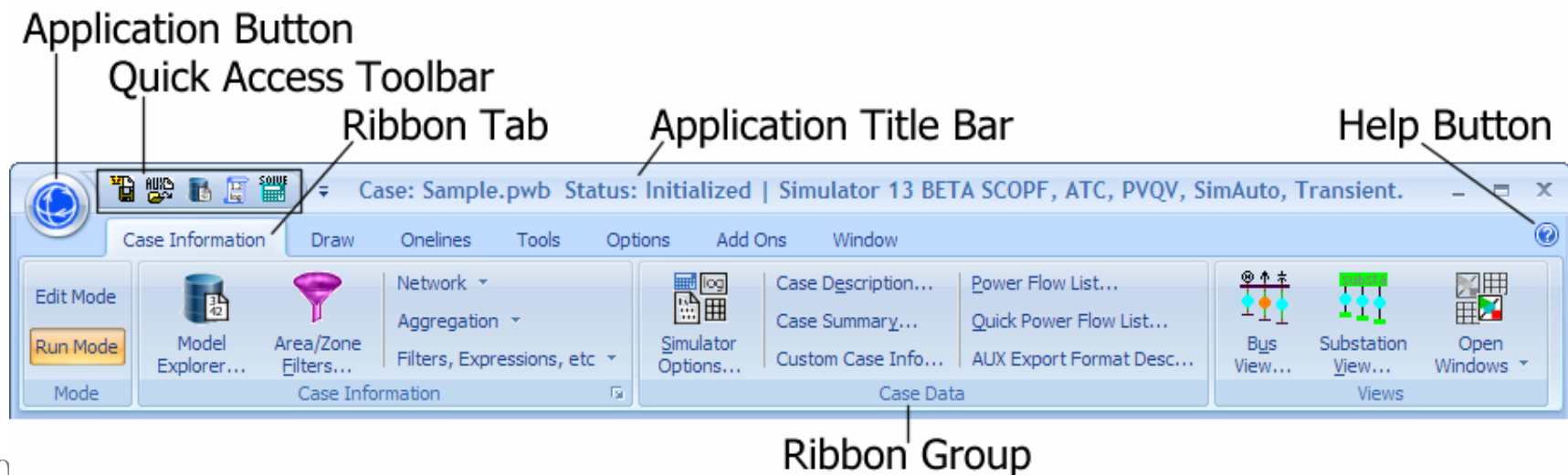
- Click the Application Button to open the Application Menu
 - This represents most of the functions that were previously in the File Menu



Ribbon Interface



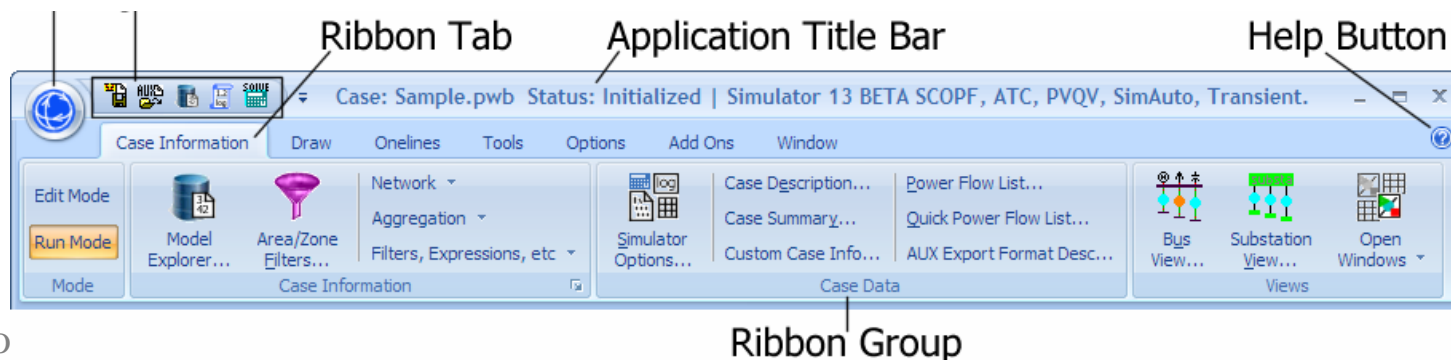
- Ribbon replaces the old menus and toolbars
 - Ribbon Tabs contain Ribbon Group which contain large menus and buttons and small
 - Quick Access Toolbar



Ribbon Interface



- Design Goals
 - Keep user decisions to short lists of choices
 - Bring attention to the most commonly used features
 - Do this using Large Buttons and Large Menus
 - Each Ribbon Tab should represent a particular way of using the software
 - Don't *hide* options – Just *disable* them
- Rule of Sevens
 - *Seven* Ribbon Tabs each containing no more than *Seven* Ribbon Groups each containing no more than *Seven* Buttons and Menus



Ribbon Tab: Case Information



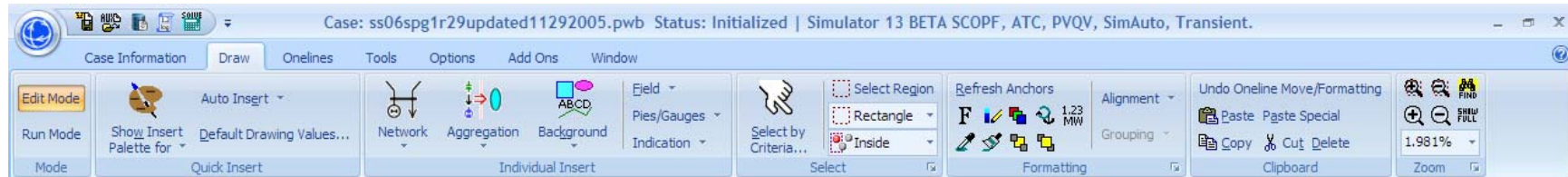
- Primarily used to navigate all of the data in your model.
- Provides access to the Model Explorer and Area/Zone/Owner Filters.



Ribbon Tab: Draw



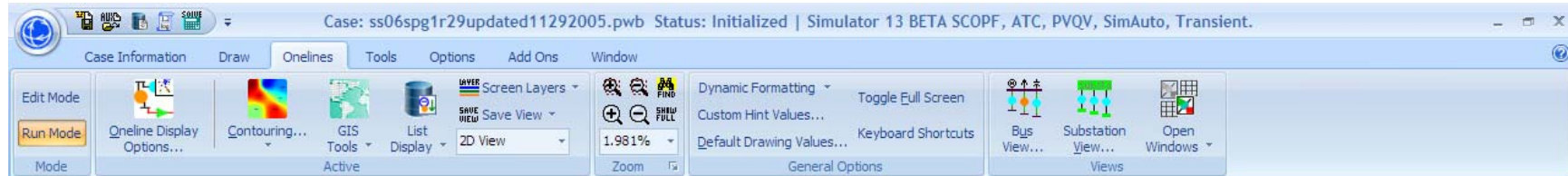
- Replaces the old Edit, Insert, and Format Menus.
- Features are used to draw new onelines or edit existing ones
 - adding, moving, formatting, or resizing existing oneline objects.



Ribbon Tab: Onelines



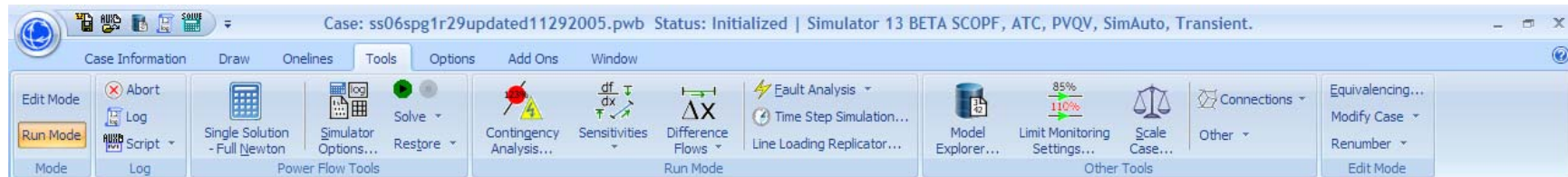
- Primarily used after you have already created a oneline diagram.
- This provides features for customizing the appearance of your oneline diagram.



Ribbon Tab: Tools



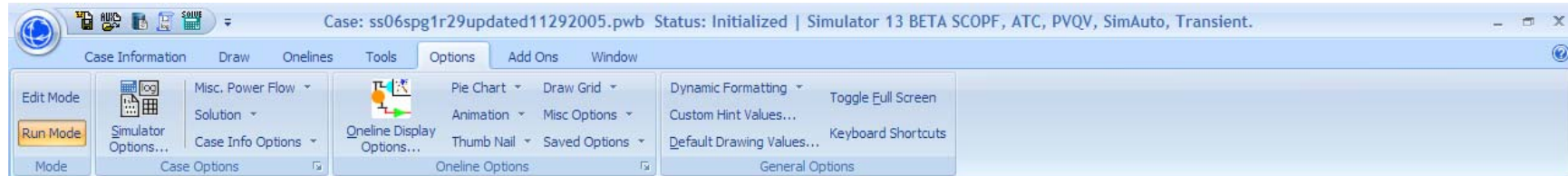
- Provides access to all of the analysis tools available in the base package of Simulator
 - Power Flow Analysis
 - Contingency Analysis
 - Sensitivities Tools.
 - Scaling
 - Connections



Ribbon Tab: Options



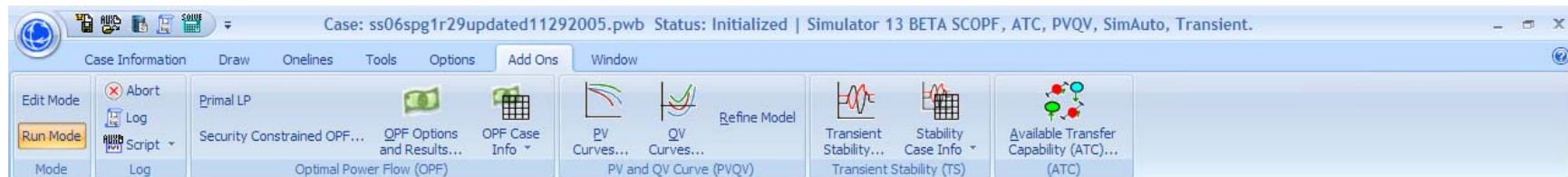
- All of the buttons on this are also available on one of the other ribbon tabs
- The Options Ribbon Tab brings most of the options in the software into one place.



Ribbon Tab: Add Ons



- This ribbon tab provides access to all of the add-on tools available for Simulator
 - OPF
 - SCOPF
 - ATC
 - PVQV



Ribbon Tab: Windows



- This ribbon tab provides access to customizing the windows in the user interface.
- It also has some information regarding help topics.
- Also information about Auxiliary Files

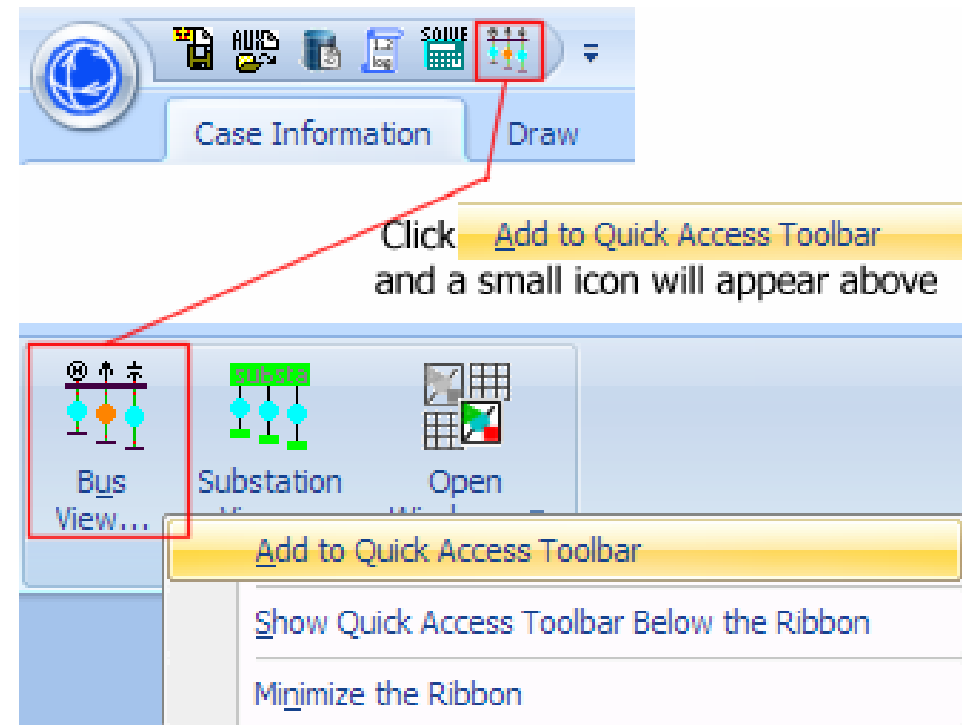


Ribbon Interface: Quick Access Toolbar



- Frequently used buttons may be added to the Quick Access Toolbar, which is always visible
- To Add a Button to the Quick Access Toolbar,
- Right click on button,

**Add to Quick
Access Toolbar**

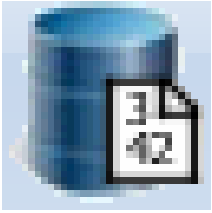




Model Explorer



- Most Case Information Displays have been rolled into the Model Explorer
- Open by selecting Case Information → Model Explorer from the Ribbon
- The Model Explorer simplifies navigation
 - Contains Fields, Explore and Options Panes
 - Recent Tabs
 - Same functionality as tabbed browsing in Microsoft Internet Explorer 7 and Mozilla Firefox
 - Easier to manage than multiple open windows
 - Case Info Toolbar resides within the Model Explorer
 - Search Toolbar at bottom for easy searching



Model Explorer



- Explore Pane: The Explore Pane contains a hierarchical list of most of the objects contained in the power system model
 - Eight Primary Folders, with only Network and Aggregations folder expanded by Default
 - Network Folder: represent physical devices
 - Aggregations Folder: represent groups of objects



Model Explorer



Explore Pane
Options Pane
Recent Tabs
Case Information Toolbar
Object Types with no data grayed-out
Search Toolbar

Number	of Bus	Name of Bus	ID	Status	Gen MW	Gen Mvar	Set Volt	AGC	AVR	Min MW	Max MW	Min Mvar	Max Mvar	Cost Model	Part. Fa
1	239	BSQSUTH2	1	Open	0.00	0.00	0.99000	YES	YES	0.00	156.00	-112.00	54.00	Cubic	
2	244	WHITNEY1	1	Closed	15.00	3.94	1.02000	YES	YES	0.00	15.00	-5.00	7.00	Cubic	0.17
3	245	WHITNEY2	2	Closed	15.00	3.94	1.02000	YES	YES	0.00	15.00	-5.00	7.00	Cubic	0.17
4	247	BSQSUTH1	2	Open	0.00	0.00	0.99000	YES	YES	0.00	156.00	-112.00	54.00	Cubic	1.99
5	251	BSQSUTH3	2	Closed	155.00	9.80	1.01000	YES	YES	0.00	155.00	-112.00	54.00	Cubic	1.99
6	253	BSQSUTH4	2	Closed						0.00	85.00	-90.00	40.00	Cubic	1.40
7	332	MILLER1	1	Open						18.50	75.00	-36.00	48.00	Cubic	0.88
8	333	MILLER2	2	Open						37.00	120.00	-40.00	73.00	Cubic	1.34
9	334	MILLER3	3	Open						65.00	208.00	-96.00	115.00	Cubic	2.40
10	335	MILLER4	4	Open						0.00	1				
11	336	MILLER5	5	Open						0.00	1				
12	344	MORSHEP	1	Closed	1					0.00	0.00				
13	345	MORSHEP2	2	Closed	1					0.00	0.00				
14	366	TENASKA	1	Closed	16					20.00	1				
15	367	TENASKA	2	Closed	9					20.00	1				
16	503	NTEXAS1	1	Open						15.00					
17	504	NTEXAS2	2	Open						15.00					
18	505	NTEXAS3	3	Open						15.00					
19	580	JKCNTY01	1	Closed	30					0.00	3				
20	581	JKCNTY02	2	Closed	16					0.00	1				
21	582	JKCNTY03	3	Closed	16					0.00	1				
22	719	WFEC 12G	1	Open						12.00					
23	719	WFEC 12G	2	Open						12.00					
24	720	WFEC 34G	3	Open						12.00	20.00	-8.00	15.00	Cubic	0.25
25	720	WFEC 34G	4	Open						12.00	20.00	-8.00	15.00	Cubic	0.25
26	837	NEWMAN5	1	Open						15.00	-40.00	0.00	17.00	Cubic	0.44
27	842	OLINGR1	1	Closed	4					20.00	77.00	0.00	40.00	Cubic	0.88
28	843	OLINGR2	1	Closed	63.90	35.34	1.03000	YES	YES	25.00	112.00	0.00	55.00	Cubic	1.34
29	844	OLINGR3	1	Closed	87.10	53.94	1.03000	YES	YES	45.00	146.00	0.00	75.00	Cubic	1.74
30	845	OLINGR4	1	Open	0.00	0.00	1.03000	YES	YES	0.00	87.00	0.00	55.00	Cubic	1.04
31	920	SPNCER1	1	Open	0.00	0.00	1.03000	YES	YES	4.00	12.00	0.00	6.00	Cubic	0.14