

# PowerWorld Builder Data Management Tools

---



Presented by: Jamie Weber, Ph.D.  
Director of Software Development



**PowerWorld**  
Corporation

2001 South First Street  
Champaign, Illinois 61820  
+1 (217) 384.6330

[support@powerworld.com](mailto:support@powerworld.com)  
<http://www.powerworld.com>

# Building Underlying Data-Management Tools



- Data Maintainer (added in Version 19)
  - Added the ability to specify with every object a reference to who is responsible for maintaining the information on this object
- Dependency Explorer
  - Visually navigate the relationships between your input data objects
- Difference Case Tool
  - Look at the differences between two data sets
- Data View Dialog
  - User-customizable dialogs
  - Built on top of case information displays
- Data Check objects
  - Built from existing PowerWorld technologies of
    - Advanced Filters
    - Calculated Fields
    - Dynamic Formatting
    - Expressions and String Expressions

# Data View Dialog

---



- Show separate presentation on this

# Data Checks

---

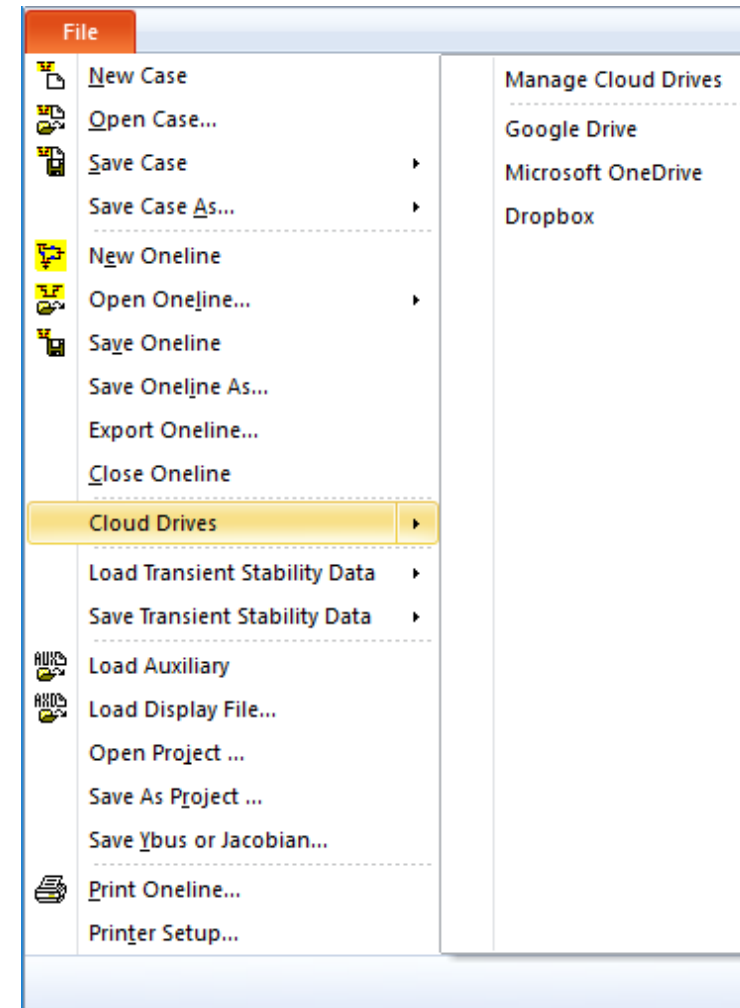


- Show separate presentation on this

# Implementing Now: Direct Connection to Cloud Drives



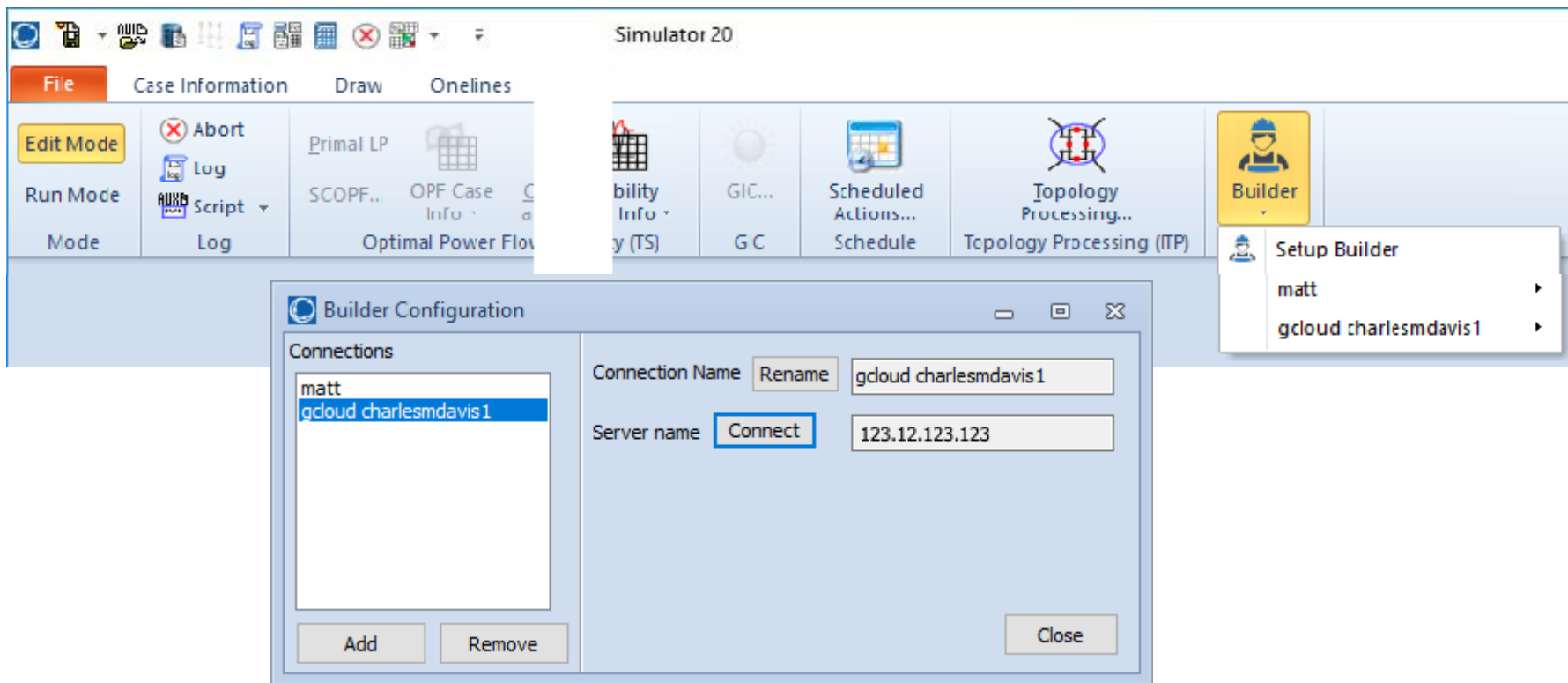
- Adding ability to directly connect to cloud drives from inside PowerWorld
  - Google Drive
  - Microsoft OneDrive
  - DropBox
- Add ability to Open, Save files directly
  - PWB, RAW, EPC, AUX, DYD, DYR, etc...
- Make it easier for you to securely share your data



# Where are all these pieces leading us?



- Case Management Tools – We are calling this PowerWorld Builder



# Initial Builder Tool



- Will only store what we call “Check Points”
  - This is a complete power system case
  - Stored in a cloud-based SQL server platform
    - PowerWorld will manage assigning credentials to this environment
- In longer-run, goal will be to insert changed to these check-points with a time stamp
  - Potentially allow you to ask for a case that is between two check-points with various changed applied